

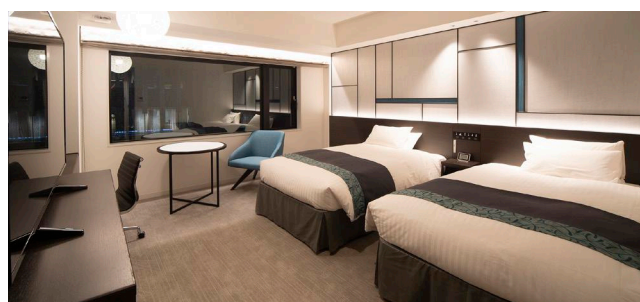


HOTEL VISCHIO OSAKA

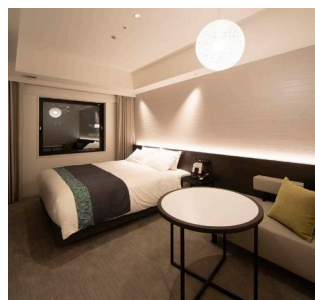
Hotel Vischio Osaka, located five minutes north of JR Osaka Station, provides a simple yet elegant ambience for a full relaxation experience in our nature-inspired spaces. Offering the best possible hospitality to guests based on our "3B" approach - bed, bath and breakfast.

Guest Rooms

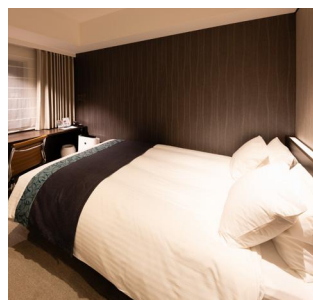
Scan the QR code for more information on guest rooms ▶



Deluxe Twin



Moderate Double



Economy Double

ROOMS : 400



CHECK IN 3:00pm

CHECK OUT 11:00am

ROOM TYPE	ROOMS	SIZE(sqm/sqft)
Double	176	16-20 m ² /182-225 ft ²
Twin 91 rooms for 3 guests, 4 rooms for 4 guests	223	20-41 m ² /225-441 ft ²
Barrier-Free	1	36 m ² /398 ft ²

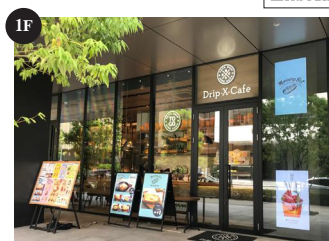
Non-smoking

Restaurant & Cafe

Scan the QR code for more information on restaurants & cafe ▶



Italian Kitchen VERDE CASSA 116seats

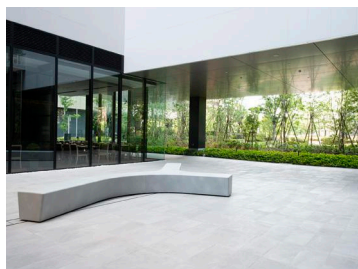


Café Drip-X-Cafe 43seats

Facilities



Laundromat

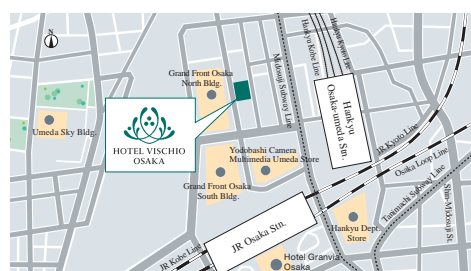


VISCHIO TERRACE (Courtyard)

Breakfast



Italian Kitchen VERDE CASSA (Buffet)



2-4-10 Shibata, Kitaku, Osaka, 530-0012 Japan

TEL: +81-6-7711-1111

FAX: +81-6-7711-5022

<https://www.hotelvischio-osaka.com/en/>

- 5mins walk from JR Osaka Station.
- 4mins from JR Shin-Osaka Station via JR Kyoto Line.
- 30mins from Osaka International Airport (ITM) by limousine bus. Aight at HERBIS OSAKA.
- 65mins from Kansai International Airport (KIX) by limousine bus. Aight at Osaka MARU Building.

