

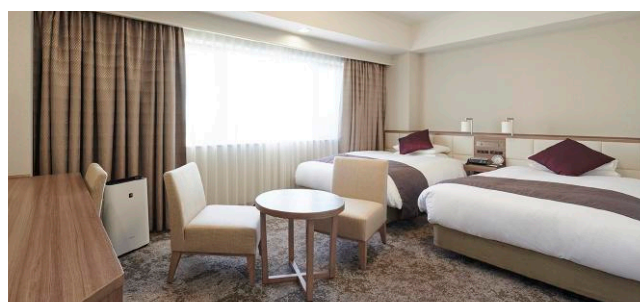


HOTEL VISCHIO AMAGASAKI

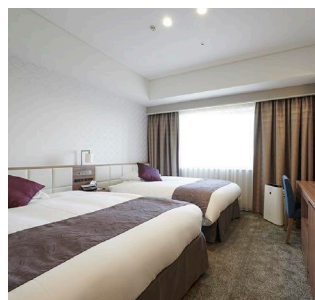
Convenience is everything when it comes to Hotel Vischio Amagasaki. Just a minute walk away from JR Amagasaki station, enjoy a cosy and soothing stay in our spacious rooms. At Hotel Vischio Amagasaki, we serve all guests using the Hotel Vischio brand's "3B" approach - bed, bath and breakfast.

Guest Rooms

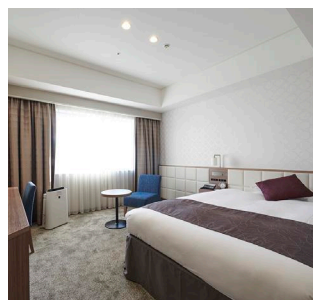
Scan the QR code for more information on guest rooms ▶



Deluxe Twin



Moderate Twin



Moderate Single

Scan the QR code for more information on restaurants ▶

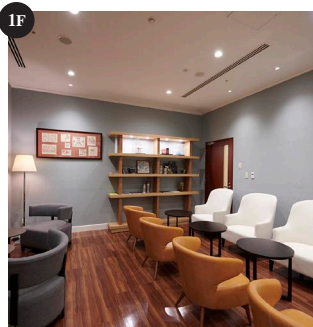
Restaurants



Facilities



Café & Restaurant WEST RIVER 90seats



Guest Lounge

ROOMS : 190



CHECK IN 3:00pm CHECK OUT 11:00am

Non-smoking

| ROOM TYPE | ROOMS | SIZE(sqm/sqft) |
|-----------------------------------------------------------------------|-------|----------------------------------------|
| Moderate Single | 70 | 20 m ² /215 ft ² |
| Moderate Twin | 95 | 20 m ² /215 ft ² |
| Deluxe Twin | 22 | 30 m ² /322 ft ² |
| Barrier-Free | 1 | 30 m ² /322 ft ² |
| Hello Kitty Special Room (Vischio's Forest Room) | 1 | 20 m ² /215 ft ² |
| Hello Kitty Special Room (Let's Explore Kansai with Hello Kitty Room) | 1 | 30 m ² /322 ft ² |

Events & Meetings



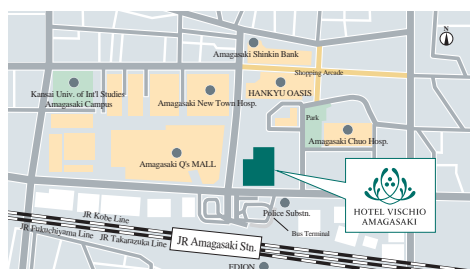
Scan the QR code for more information on banquet rooms ▶



| FLOOR | NAME | SIZE (m ²) | CEILING HEIGHT (m) | MAXIMUM Capacity | | |
|-------|---------|------------------------|--------------------|------------------|--------|--------|
| | | | | DINNER | BUFFET | SCHOOL |
| 2F | OAK | 343 | 3.9 | 200 | 200 | 200 |
| | OAK 1/2 | 172 | 3.9 | 90 | 90 | 100 |
| | SEINE | 53 | 3.2 | 20 | 20 | 20 |
| 1F | HOLLY | 128 | 2.88 | 60 | 60 | 60 |
| | CYPRUS | 77 | 2.88 | 40 | 40 | 40 |
| | DANUBE | 43 | 2.88 | 20 | — | 20 |
| | LENA | 39 | 2.88 | 20 | — | 20 |
| | MAUSER | 16 | 2.88 | 6 | — | — |
| | HERVE | 14 | 2.88 | 6 | — | — |



Banquet Room OAK



1-4-1 Shioe, Amagasaki City, Hyogo,
661-0976 Japan

TEL: +81-6-6491-0002

FAX: +81-6-6491-8575

<https://www.hotelvischio-amagasaki.com>

- 1mins walk from JR Amagasaki Station (Easily accessible from Osaka and Kobe).
- 5mins by JR Rapid Service from JR Osaka Station.
- 11mins by JR Rapid Service from JR Shin-Osaka Station.
- 65mins from Kansai International Airport (KIX) by limousine bus.
- 40mins from Osaka International Airport (ITM) by limousine bus and JR Train (from Shin-Osaka Station).
- 10mins from Amagasaki IC by car.

