

A Central Hub Connecting Travelers with the Real Japan, with a Focus on Hotels Offering Direct Station Access. This is The West Japan Railway Hotel Group.

Welcoming guests with smiles second to none,
We are JR-West Hotels.



POINT 1

Unrivaled Access to the Hotel

Our hotels are located next to major stations throughout Western Japan, offering unrivaled convenience for all business and leisure travellers.

5 Key Features of JR-West Hotels

POINT 2

Full Range of Hotel Facilities

A full-range of facilities at our hotels, designed to meet your needs and provide an enjoyable stay.



POINT 3

Wide Variety of Room Types

Enjoy refined comfort and relaxation—mere steps from the train station! We offer a wide variety of room types for all guests. Be it for leisure or business, our hotels are tailored to individual needs and paired with meticulous and thorough hospitality.



POINT 4

Delectable Dining Options

Each dish is made using carefully selected ingredients, creating a long-lasting impression with each bite. Whether you are looking to treat someone important to an impressive meal or simply gathering to eat with family and friends, our restaurants and bar will be ready to welcome you.



POINT 5

Excellent Selection of Banquet Facilities

We offer large banquet halls suitable for MICE events (meetings, incentives, conferences and exhibitions), as well as facilities for small to medium-scale events. Make full use of our banquet facilities and meet all your needs for a successful event.



JR-West Hotels is a hotel group that operates primarily in the Kansai region of Japan. It boasts 11 properties across 4 brands which includes Hotel Granvia, a full-service hotel with world-class hospitality; Hotel Vischio, a hotel that offers easy access and an outstanding lodging experience; community-focused Umekoji Potel Kyoto as well as Nara Hotel, a timeless classic hotel in a modern setting.

JR-West Hotels

JR-West Hotels

Legend



Café



Restaurant



Public Bath



Fitness /
Gym



Pool



Club
Lounge



Guest
Lounge



Laundromat



HOTEL GRANVIA KYOTO

Guest Rooms (537 rooms)
(Maximum Capacity: 1092 pax)
Banquet halls (15 rooms) / GENJI Banquet Hall
Maximum Capacity: 700 pax (Dinner)

Directly connected
to JR Kyoto station



HOTEL GRANVIA OSAKA

Guest Rooms (726 rooms)
(Maximum Capacity: 1471 pax)
Banquet halls (11 rooms) / NANIWA Banquet Hall
Maximum Capacity: 300 pax (Dinner)

Directly connected
to JR Osaka station



HOTEL GRANVIA WAKAYAMA

Guest Rooms (155 rooms)
(Maximum Capacity: 238 pax)
Banquet halls (7 rooms) / LE GRAND Banquet Hall
Maximum Capacity: 374 pax (Dinner)

2minutes from JR
Wakayama Station



HOTEL GRANVIA OKAYAMA

Guest Rooms (329 rooms)
(Maximum Capacity: 515 pax)
Banquet halls (11 rooms) / PHOENIX Banquet Hall
Maximum Capacity: 640 pax (Dinner)

Directly connected
to JR Okayama station



HOTEL GRANVIA HIROSHIMA

Guest Rooms (407 rooms)
(Maximum Capacity: 597 pax)
Banquet halls (12 rooms) / YUKYU Banquet Hall
Maximum Capacity: 600 pax (Dinner)

Directly connected
to JR Hiroshima station



HOTEL VISCHIO KYOTO

Guest Rooms (423 rooms)
(Maximum Capacity: 939 pax)

2minutes from
JR Kyoto station



HOTEL VISCHIO OSAKA

Guest Rooms (400 rooms)
(Maximum Capacity: 899 pax)

5minutes from JR
Osaka station



HOTEL VISCHIO AMAGASAKI

Guest Rooms (190 rooms)
(Maximum Capacity: 409 pax)
Banquet halls (8 rooms) / OAK Banquet Hall
Maximum Capacity: 200 pax (Dinner)

Directly connected
to JR Amagasaki station



HOTEL VISCHIO TOYAMA

Guest Rooms (182 rooms)
(Maximum Capacity: 387 pax)

Directly connected
to JR Toyama station



Nara Hotel

Guest Rooms (127 rooms)
(Maximum Capacity: 254 pax)
Banquet halls (7 rooms) / YAMATO Banquet Hall
Maximum Capacity: 330 pax (Dinner)



Umekoji Potel

Guest Rooms (144 rooms)
(Maximum Capacity: 364 pax)
Banquet halls (2 rooms) / Party Room Banquet Hall
Maximum Capacity: 60 pax (Dinner)



Sento
(Public Bath)



THE OSAKA STATION HOTEL

Guest Rooms (418 rooms)
(Maximum Capacity: 910 pax)
Banquet halls (5 rooms)
/ THE BALLROOM Banquet Hall
Maximum Capacity: 420 pax (Dinner)



Contact Us

Tokyo

JR-West Hotels Tokyo branch

Tel. +81-3-4363-2100 Fax. +81-3-4363-2111

E-mail: tyo@granvia-kyoto.co.jp

Singapore

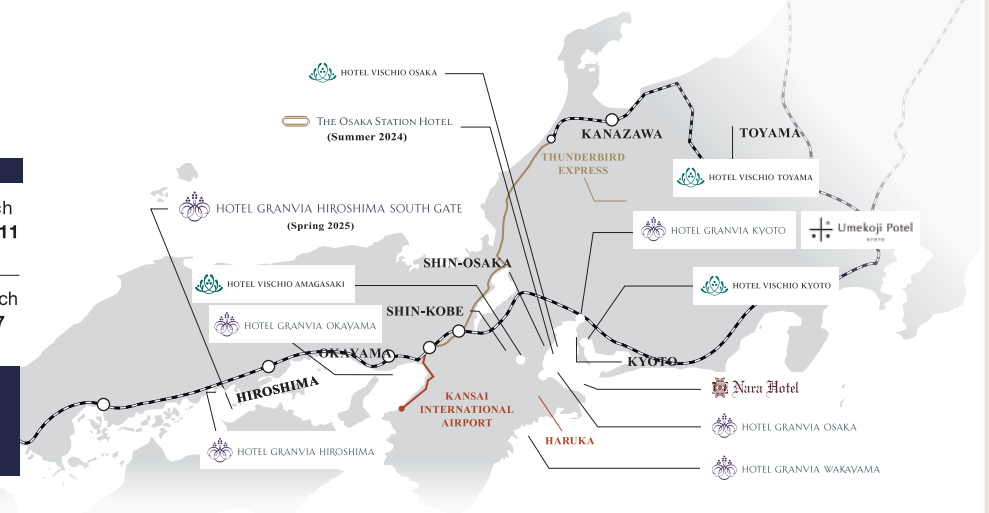
JR-West Hotels Singapore branch

Tel. +65-6258-2902 Fax. +65-6258-2907

E-mail: sg.sales@hotels.westjr.co.jp



JR-West Hotels
Official site



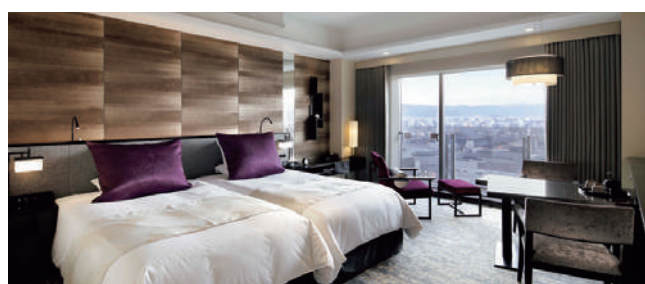


HOTEL GRANVIA KYOTO

A new lodging experience in Japan's ancient capital. Your gateway to Kyoto city, Hotel Granvia Kyoto is a hotel that brings people, culture, information and functions together - an intersection of history and future. Start your journey with us and experience a comfortable and enjoyable time made possible with Japanese traditions.

Guest Rooms

Scan the QR code for more information on guest rooms ▶



Granvia Deluxe Twin



Superior Twin Tower View

ROOMS : 537



CHECK IN 3:00pm

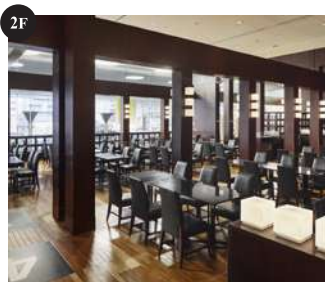
CHECK OUT 12:00pm

ROOM TYPE	ROOMS	SIZE(sqm/sqf)
Twin	345	26-33 m ² /279-355 ft ²
Double	75	24-32 m ² /258-344 ft ²
Family	5	62 m ² /667 ft ²
Barrier-Free	6	34 m ² /365 ft ²
Triple	4	41 m ² /441 ft ²

Granvia Floor & Suites (Access to the Granvia Lounge)

Twin / Double	81	26-48 m ² /279-516 ft ²
Family	2	62 m ² /667 ft ²
Suite	19	50-180 m ² /538-1,937 ft ²

Breakfast



Allday Dining **LE TEMPS** 164seats



Japanese **UKIHASHI** 90seats

Club Lounge



Granvia Lounge [Exclusively for Granvia Floor Guests]

Facilities



Pool



Fitness



Pastry & Bakery shop **LE TEMPS**



Souvenir shop

Events & Meetings



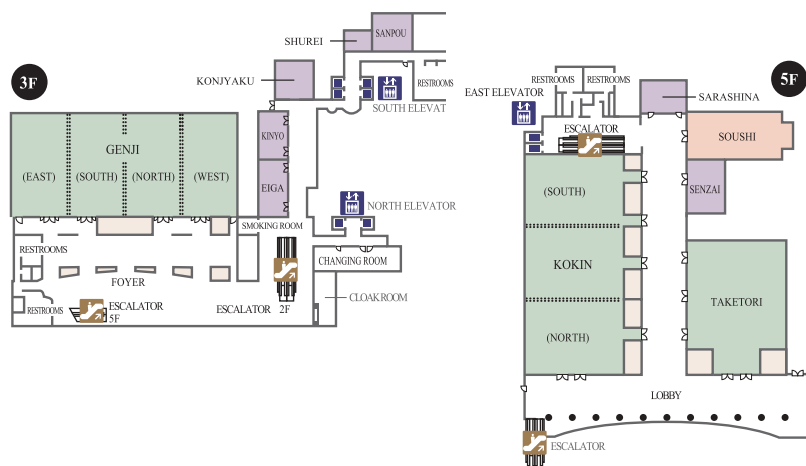
Scan the QR code for more information on banquet rooms ▶



GENJI



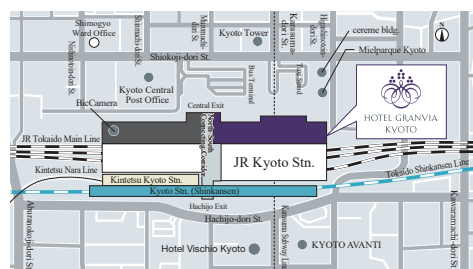
KOKIN



FLOOR	NAME	SIZE (m ²)	CEILING HEIGHT (m)	MAXIMUM Capacity		
				DINNER	BUFFET	SCHOOL
3F	GENJI	1200	5.8	700	1200	1000
	(3/4)	880	5.8	430	750	720
	(1/2)	580	5.8	280	500	450
	(1/4)	280	5.8	130	250	240
	EIGA	90	2.6	40	40	66
	KINYAKU	70	2.6	30	30	54
	KONJYAKU	80	2.6	40	40	60
	SANPOU	66	2.6	30	30	27
	(1/2)	33	2.6	—	—	15
	SHUREI	40	2.6	10	20	10
	(1/2)	20	2.6	—	—	—
5F	KOKIN	730	5.2	400	600	700
	(2/3)	470	5.2	250	360	330
	(1/3)	230	5.2	100	180	165
	TAKETORI	360	5.5	180	300	260
	SOUSHI	150	5.0	60	80	95
	SENZAI	60	2.6	30	30	40
	SARASHINA	39	2.6	—	—	10

Restaurants & Bars

Scan the QR code for more information on restaurants & bars ▶

View&Dining **COTOCIEL** 70seatsTeppan-yaki **GOZANBO** 27seatsChinese **ROPPOGI ROGAIRO** 96seatsJapanese **UKIHASHI** 98seatsJapanese **TAKESHIGERO** 56seatsTempura **KYORINSEN** 29seatsPrivate dining **SHIOKOJI RAKUSUI** 20seatsAll day dining **LE TEMPS** 164seatsMain bar **ORBITE** 62seatsLobby Lounge **GRAND JOUR** 90seats

JR Kyoto Station, Central Exit,
Shiokoji-sagaru, Karasuma-dori, Shimogyo-ku,
Kyoto, 600-8216 Japan

TEL: +81-75-344-8888

FAX: +81-75-344-4400

<https://www.granviakyo.com>

- Directly connected to JR Kyoto station. Exit from the Central Gate of JR Kyoto Station and take the escalator on the right to the lobby on the 2nd floor.
- 2hrs20mins by JR Shinkansen (bullet train) from Tokyo station.
- 75mins from Kansai International Airport (KIX) by Haruka Express train.
- 88mins from Kansai International Airport (KIX) by limousine bus.





HOTEL GRANVIA OSAKA

Delivering the greatest possible convenience to guests, Hotel Granvia Osaka is directly connected to JR Osaka Station, the hub of Kansai region. On top of the wide selection of rooms and facilities available, the hotel also has 9 types of restaurants and 11 banquet halls to meet your specific needs.

Guest Rooms

Scan the QR code for more information on guest rooms ▶



<GRANVIA FLOOR> Granvia Twin



Standard Twin



Deluxe Single

ROOMS : 726



CHECK IN 3:00pm

CHECK OUT 12:00pm

ROOM TYPE	ROOMS	SIZE(sqm/sqf)
Single	296	14-20 m ² /150-215 ft ²
Double	103	17-35 m ² /182-376 ft ²
Twin	236	17-38 m ² /182-408 ft ²
Family	22	43-70 m ² /462-753 ft ²
Barrier-Free	1	38 m ² /408 ft ²

Granvia Floors (27th Floor) [Access to the Granvia Lounge]

Non-smoking

Twin	29	30-38 m ² /322-408 ft ²
Double	39	21-30 m ² /225-322 ft ²

Breakfast



French restaurant **FLEUVE** (Buffet)



Cafe & Dining **IGNITE** (Breakfast set)

Club Lounge



Granvia Lounge [Exclusively for Granvia Floor Guests]

Facilities



Main entrance



Information Counter (19F)



French restaurant **FLEUVE**
(Private Room)



Traditional Japanese **OSAKA UKIHASHI**
(Private Room)

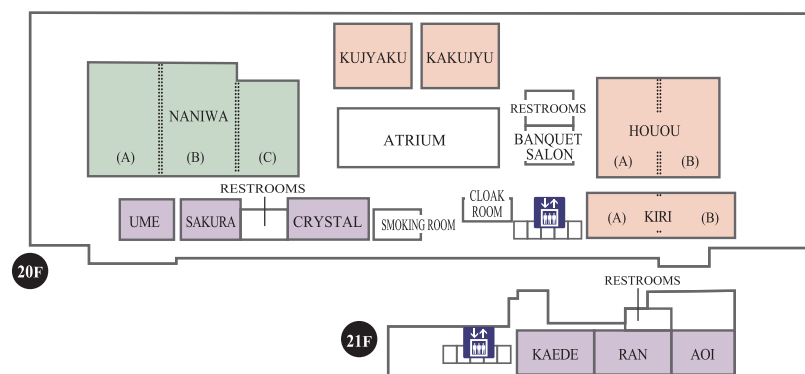
Events & Meetings



HOUOU



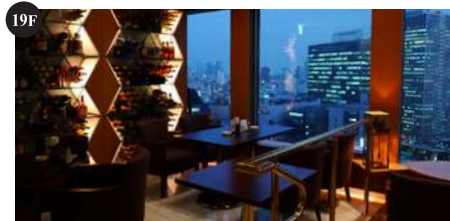
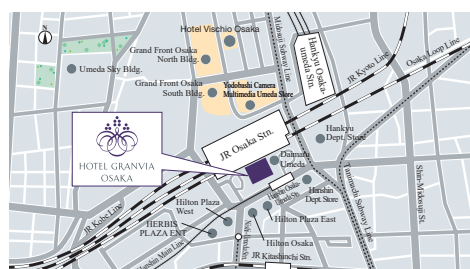
SAKURA



FLOOR	NAME	SIZE (m ²)	CEILING HEIGHT (m)	MAXIMUM Capacity		
				DINNER	BUFFET	SCHOOL
20F	NANIWA	562	4.5(3.6)	300	400	330
	NANIWA (A+B)	430	4.5	200	250	220
	NANIWA (B+C)	347	4.5(3.6)	150	200	192
	NANIWA (A)	215	4.5	120	120	120
	NANIWA (B)	215	4.5	120	120	120
	NANIWA (C)	132	3.6	60	70	60
	HOUOU	290	3.5	150	150	150
	HOUOU (A)	165	3.5	90	100	90
	HOUOU (B)	125	3.5	60	60	70
	KUJYAKU	132	3.5	60	70	70
	KAKUJYU	132	3.5	60	70	70
	KIRI	128	3.4	50	60	—
	KIRI (A)	71	3.4	30	40	30
	KIRI (B)	57	3.4	20	30	24
	CRYSTAL	66	3.2	30	30	—
21F	SAKURA	66	2.4	30	30	30
	UME	26	2.4	12	—	—
	KAEDE	61	2.4	30	30	30
	RAN	66	2.4	30	30	30
	AOI	52	2.4	30	30	30

Restaurants & Bar

Scan the QR code for more information on restaurants & bars ▶

French restaurant **FLEUVE** 92seatsTeppan-yaki **KIRYU** 31seatsSky Dining **AB** 140seatsTraditional Japanese **OSAKA UKIHASHI** 92seatsCasual Japanese **SHIZUKU** 88seatsBar **SANDBANK** 55seatsLounge **RIVER HEAD** 92seats**TEA LOUNGE** 136seatsCafe & Dining **IGNITE** 123seats

3-1-1 Umeda Kita-ku, Osaka, 530-0001 Japan

TEL: +81-6-6345-1261 (Reservation, AM9:00 ~ PM5:00)

FAX: +81-6-6344-1130

<https://www.hotelgranviaosaka.jp/en/>



- Directly connected to JR Osaka station.
- 4mins from JR Shin-Osaka station via JR Kyoto-line.
- 65mins from Kansai International Airport (KIX) by limousine bus. Alight at HERBIS Osaka.
- 30mins from Osaka International Airport (ITM) by limousine bus. Alight at Osaka MARU building.





HOTEL GRANVIA WAKAYAMA

Wakayama Prefecture is an attractive destination filled with tradition, history, and a good balance of mountains and sea. With so much more to explore and discover, start your Kishu region travel with Hotel Granvia Wakayama.

Guest Rooms

Scan the QR code for more information on guest rooms ▶



Twin



Suite



Double

ROOMS : 155



CHECK IN 2:00pm

CHECK OUT 11:00am

ROOM TYPE	ROOMS	SIZE(sqm/sqf)
Single	72	15 m ² /161 ft ²
Double	26	16-26 m ² /172-279 ft ²
Twin	55	20-35 m ² /215-376 ft ²
Japanese Style	1	38 m ² /409 ft ²
Suite	1	65 m ² /699 ft ²

Breakfast



Buffet Restaurant DINING"M" 80seats



Lounge



Roof Top ~ Relaxing Terrace~
(For overnight guests only, closed during winter seasons)

Facilities



Pillow Selection Corner



Welcome Drinks for Hotel Guests



Lobby (coworking space)

Events & Meetings



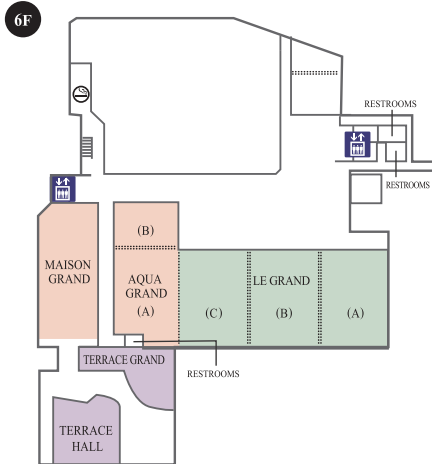
Scan the QR code for more information on banquet rooms ▶



TERRACE HALL



TERRACE GRAND



FLOOR	NAME	SIZE (m ²)	CEILING HEIGHT (m)	MAXIMUM Capacity		
				DINNER	BUFFET	SCHOOL
6F	LE GRAND	623	5.7	374	450	450
	LE GRAND 2/3	413	5.7	242	250	300
	LE GRAND 1/3	210	5.7	99	120	150
	MAISON GRAND	218	2.8	99	120	120
	AQUA GRAND	209	2.7	110	150	144
	AQUA GRAND (A)	143	2.7	66	100	96
	AQUA GRAND (B)	66	2.7	33	45	45
	TERRACE GRAND	99	2.5	33	40	—
	TERRACE HALL	138	3.7	66	60	63



LE GRAND (school)



LE GRAND (Reception)

Restaurants

Scan the QR code for more information on restaurants ▶



Hotel café **PASSWORD** 80seats



Japanese **MARI** 22seats / Temporary closure



Buffet Restaurant **DINING"M"** 80seats / Only breakfast services



5-18 Tomoda-cho, Wakayama City, Wakayama,
640-8342 Japan

TEL: +81-73-425-3333

FAX: +81-73-422-1871

<https://www.granvia-wakayama.co.jp/english/>

- 2mins walk from JR Wakayama Station(Central Exit).
- 60mins by Express Train (Kuroshio) from Shin-Osaka station.
- 40mins from Kansai International Airport (KIX) by limousine bus.
- 15mins from Wakayama city center via Wakayama IC (By Car).





You are cordially invited to the Hotel Granvia Okayama.
Experience our warm hospitality where our highly trained staff can offer a bespoke experience for each guest.
Relax in our luxurious suites where comfort meets style and book a delightful stay in the city's ideal location to complement your visit to Okayama.

Guest Rooms

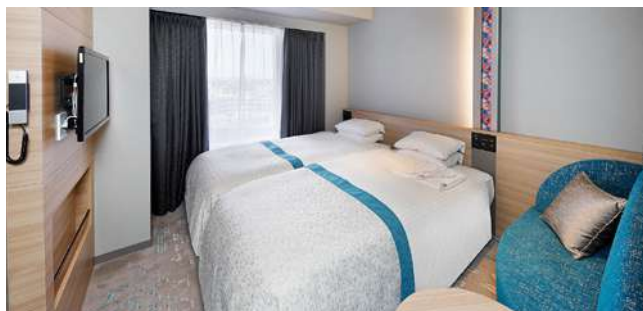
Scan the QR code for more information on guest rooms ▶



Granvia Twin



Family Deluxe



Twin

ROOMS : 329



CHECK IN 3:00pm

CHECK OUT 12:00pm

ROOM TYPE	ROOMS	SIZE(sqm/sqf)
Single	144	15-17 m ² /161-182 ft ²
Double	29	22-32 m ² /236-344 ft ²
Twin	147	22-40 m ² /236-430 ft ²
Barrier-Free	3	34-37 m ² /365-398 ft ²
Family Deluxe	3	70 m ² /753 ft ²
Suite	3	69-137 m ² /742-1,474 ft ²

Breakfast



Dining & Bar **APPLAUSE** (Buffet)

Facilities



Pool



Chapel



Japanese restaurant **KIBIZEN** (PRIVATE ROOM)

Events & Meetings



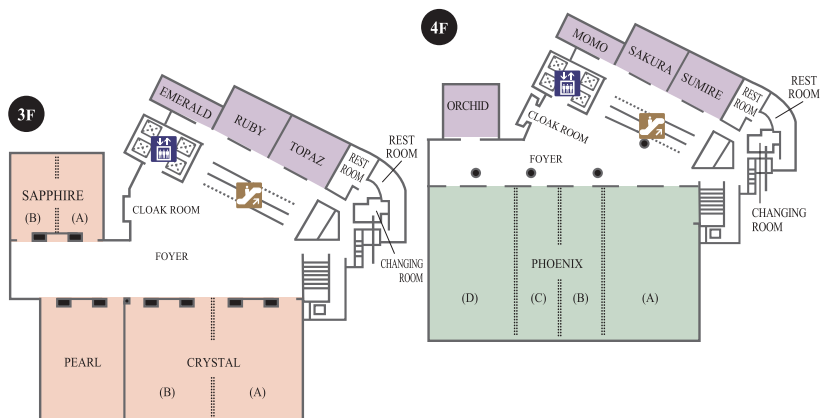
Scan the QR code for more information on banquet rooms ▶



PHOENIX



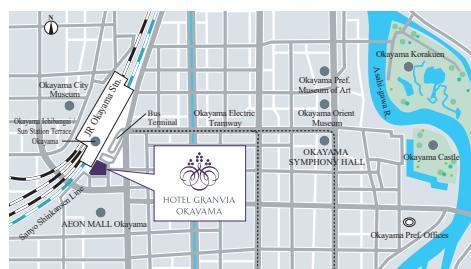
CRYSTAL



FLOOR	NAME	SIZE (m ²)	CEILING HEIGHT (m)	MAXIMUM Capacity		
				DINNER	BUFFET	SCHOOL
4F	PHOENIX	1004	6.0	640	1300	700
	(2/3)	669	6.0	400	650	460
	(1/2)	502	6.0	300	480	330
	(1/3)	334	6.0	180	320	200
	MOMO	43	3.0	20	—	—
	SAKURA	67	3.0	30	30	30
	SUMIRE	67	3.0	30	30	30
	ORCHID	72	3.0	30	30	30
3F	CRYSTAL	464	3.0	270	450	280
	(1/2)	232	3.0	120	180	130
	PEARL	226	3.0	120	180	130
	SAPPHIRE	171	3.0	80	130	90
	(1/2)	85	3.0	40	40	35
	EMERALD	43	3.0	20	—	—
	RUBY	67	3.0	30	30	30
	TOPAZ	67	3.0	30	30	30

Restaurants & Bars

Scan the QR code for more information on restaurants & bars ▶

French restaurant **PRIX D'OR** 32seatsTeppan-yaki **BISA I** 24seatsMain bar **LEADERS** 31seatsDining & Bar **APPLAUSE** 76seatsChungking Chinese **SZECHWAN RESTAURANT**Japanese restaurant **KIBIZEN** 82seatsLobby Lounge **LUMIERE** 78seats

1-5 Ekimoto-machi, Kita-ku, Okayama City, Okayama, 700-8515, Japan

TEL: +81-86-233-3444

FAX: +81-86-234-7099

<https://www.granvia-oka.co.jp/lang/en/>

- Directly connected to 2nd floor of JR Okayama station.
- 45mins by JR Shinkansen (bullet train) from JR Shin-Osaka station.
- 40mins by Okayama Airport limousine bus.
- 20mins from Okayama IC by car.





HOTEL GRANVIA HIROSHIMA

Hiroshima, the peaceful city of cherry blossoms, flowing rivers, red autumn leaves, elegant Japanese koi fish, and picturesque scenery of the sea and island. Come and be awed by the beauty of Hiroshima and her four seasons every time you stay with us, only at Hotel Granvia Hiroshima.

Scan the QR code for more information on guest rooms ▶



Guest Rooms



Premium Floor 4Beds



Granvia Deluxe Twin

ROOMS : 407



CHECK IN 2:00pm

CHECK OUT 12:00pm

ROOM TYPE	ROOMS	SIZE(sqm/sqf)
Single	70	17-18 m ² /182-193 ft ²
Semi-Double	136	18 m ² /193 ft ²
Double	15	21 m ² /226 ft ²
Twin	132	26 m ² /279 ft ²
Barrier-Free	1	26 m ² /279 ft ²

GRANVIA FLOOR & SUITES (Access to the Granvia Lounge)

Semi-Double	18	18 m ² /193 ft ²
Twin · Double	27	25-52 m ² /269-559 ft ²
Barrier-Free	1	36 m ² /387 ft ²
Premium Floor 4Beds	4	66 m ² /710 ft ²
Suite	3	55-74 m ² /592-796 ft ²

Breakfast



Café & Buffet **DISH PARADE** (Buffet)



Japanese **SETOUCHI** (Japanese)

Club Lounge



Granvia Lounge [Exclusive access for guests staying on the 5th, 19th and 20th floors]

Facilities



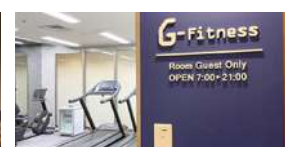
Concierge · Information Center



Chapel **LUNA LUCIA**



Patisserie **DISH PARADE**



Fitness



Shopping

Events & Meetings



YUKYU



SHOKO



FLOOR	NAME	SIZE (m ²)	CEILING HEIGHT (m)	MAXIMUM Capacity		
				DINNER	BUFFET	SCHOOL
4F	YUKYU	1010	6	600	1200	600
	YUKYU 2/3	660	6	330	600	430
	YUKYU 1/2	500	6	240	400	300
	YUKYU 1/3 (A)	350	6	140	250	210
	YUKYU 1/3 (B)	310	6	140	200	210
	KATSURA	42	3.3	20	30	27
	KAEDE	45	3.3	20	30	27
	AZUSA	40	3.3	20	30	27
3F	TENPYO	380	3	180	250	240
	TENPYO (A)	220	3	90	120	120
	TENPYO (B)	160	3	70	80	80
	ASUKA	210	3	90	120	120
	AKI MIYAJIMA	95	3.1	50	60	54
	AKI	48	3.1	24	30	27
	MIYAJIMA	48	3.1	24	30	27
	MISEN	42	3.1	24	30	27
	TAKASAGO	50	2.8	24	30	24
	AIOI	50	2.8	24	30	24
21F	SHOKO	110	2.2	60	60	50

Restaurants & Bars

Scan the QR code for more information on restaurants & bars ▶



Sky restaurant & Lounge L & R 124seats



Steakhouse JINSEKI 14seats



Japanese SETOUCHI 88seats



Chinese KOH-RAN-EN 106seats



Café&Buffet DISH PARADE 116seats



Tea Lounge LOBBY LOUNGE 64seats



Main bar MAY FLOWER 53seats



1-5 Matsubara-cho, Minami-ku, Hiroshima,
732-0822 Japan

TEL: +81-82-262-1111

FAX: +81-82-262-4050

<https://www.hgh.co.jp/english/>



- Directly connected to JR Hiroshima station.
- 90mins by JR Shinkansen (bullet train) from Shin-Osaka station.
- 45mins by Hiroshima Airport limousine bus.
- 30mins from Hiroshima IC by car.
- 25mins from Itsukaichi IC by car.





HOTEL VISCHIO KYOTO

Situated two minutes away from JR Kyoto Station.

Using the "3B" approach, Hotel Vischio Kyoto is dedicated to provide all guests the "Hotel Granvia Kyoto" quality of "Bed", "Bath" and "Breakfast" made with Kyoto's local ingredients.

Guest Rooms

Scan the QR code for more information on guest rooms ▶



Moderate Twin



Superior Twin

Restaurant

Scan the QR code for more information on restaurants ▶



Restaurant VISCHIO GARDEN 184seats

Non-smoking		
ROOMS : 423	Free WiFi	CHECK IN 3:00pm CHECK OUT 11:00am
ROOM TYPE	ROOMS	SIZE(sqm/sqft)
Double	56	21 m ² /226 ft ²
Twin	312	21-38 m ² /226-409 ft ²
Triple	49	26 m ² /279 ft ²
Family	5	39 m ² /419 ft ²
Barrier-Free	1	43 m ² /462 ft ²

Facilities



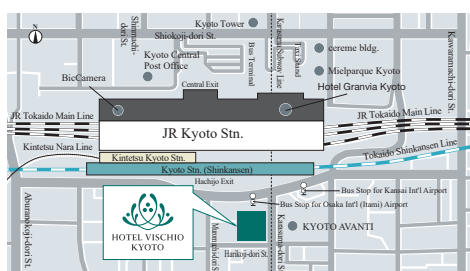
Guest Lounge



Public Bath



Fitness room



44-1, Kamitonoda-cho, Higashikujo, Minami-ku, Kyoto City, Kyoto, 601-8002 Japan

TEL: +81-75-280-1111

FAX: +81-75-280-0122

<https://www.hotelvischio-kyoto.com>

- 2mins walk from JR Kyoto Station Hachijo Exit.
- 2hrs20mins by JR Shinkansen (bullet train) from Tokyo Station.
- 75mins from Kansai International Airport(KIX) by Haruka Express train.
- 55mins from Osaka International Airport (ITM) by limousine bus.
- 20mins from Kyoto-Minami IC by car (30min. from Kyoto-Higashi IC by car).





HOTEL VISCHIO OSAKA

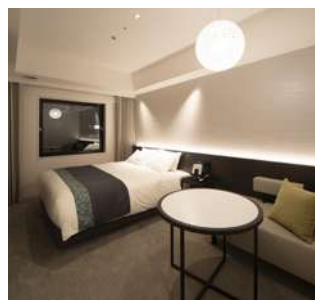
Hotel Vischio Osaka, located five minutes north of JR Osaka Station, provides a simple yet elegant ambience for a full relaxation experience in our nature-inspired spaces. Offering the best possible hospitality to guests based on our "3B" approach - bed, bath and breakfast.

Guest Rooms

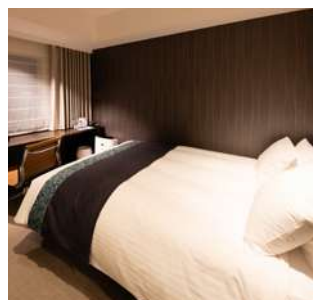
Scan the QR code for more information on guest rooms ▶



Deluxe Twin



Moderate Double



Economy Double

ROOMS : 400



CHECK IN 3:00pm

CHECK OUT 11:00am

Non-smoking

ROOM TYPE	ROOMS	SIZE(sqm/sqft)
Double	176	17-21 m ² /182-225 ft ²
Twin (Rooms that can accommodate up to 3 guests 91 Rooms that can accommodate up to 4 guests 4)	223	21-41 m ² /225-441 ft ²
Barrier-Free	1	37 m ² /398 ft ²

Restaurant & Cafe

Scan the QR code for more information on restaurants & cafe ▶



Italian Kitchen VERDE CASSA 130seats



Café Drip-X-Cafe 43seats

Facilities



Laundromat

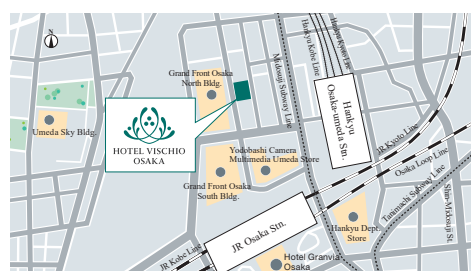


VISCHIO TERRACE (Courtyard)

Breakfast



Italian Kitchen VERDE CASSA (Buffet)



2-4-10 Shibata, Kitaku, Osaka, 530-0012 Japan

TEL: +81-6-7711-1111

FAX: +81-6-7711-5022

<https://www.hotelvischio-osaka.com/en/>

- 5mins walk from JR Osaka Station.
- 4mins from JR Shin-Osaka Station via JR Kyoto Line.
- 30mins from Osaka International Airport (ITM) by limousine bus. Alight at HERBIS OSAKA.
- 65mins from Kansai International Airport (KIX) by limousine bus. Alight at Osaka MARU Building.





HOTEL VISCHIO AMAGASAKI

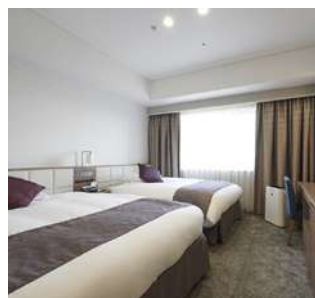
Convenience is everything when it comes to Hotel Vischio Amagasaki. Just a minute walk away from JR Amagasaki station, enjoy a cosy and soothing stay in our spacious rooms. At Hotel Vischio Amagasaki, we serve all guests using the Hotel Vischio brand's "3B" approach - bed, bath and breakfast.

Guest Rooms

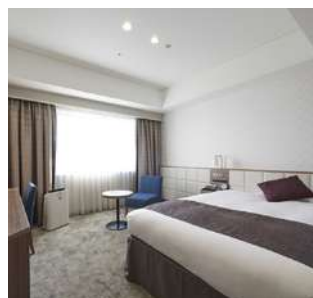
Scan the QR code for more information on guest rooms ▶



Deluxe Twin



Moderate Twin



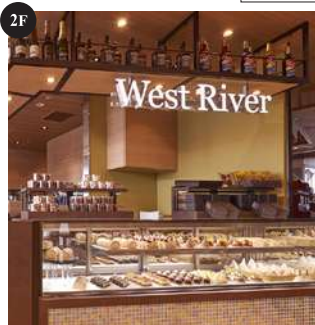
Moderate Single

Scan the QR code for more information on restaurants ▶

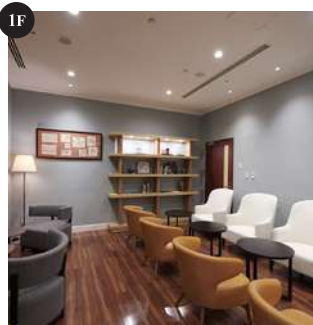
Restaurants



Facilities



Café & Restaurant WEST RIVER 90seats



Guest Lounge

ROOMS : 190



CHECK IN 3:00pm CHECK OUT 11:00am

Non-smoking

ROOM TYPE	ROOMS	SIZE(sqm/sqft)
Moderate Single	70	20 m ² /215 ft ²
Moderate Twin	95	20 m ² /215 ft ²
Deluxe Twin	22	30 m ² /322 ft ²
Barrier-Free	1	30 m ² /322 ft ²
Hello Kitty Special Room (Vischio's Forest Room)	1	20 m ² /215 ft ²
Hello Kitty Special Room (Let's Explore Kansai with Hello Kitty Room)	1	30 m ² /322 ft ²

Events & Meetings



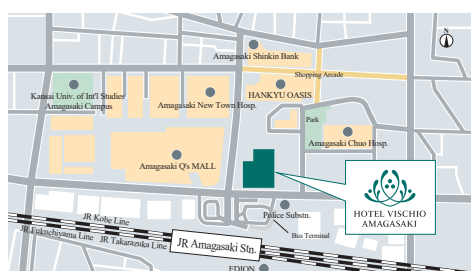
Scan the QR code for more information on banquet rooms ▶



FLOOR	NAME	SIZE (m ²)	CEILING HEIGHT (m)	MAXIMUM Capacity		
				DINNER	BUFFET	SCHOOL
2F	OAK	343	3.9	200	200	200
	OAK 1/2	172	3.9	90	100	100
	SEINE	53	3.2	20	20	20
1F	HOLLY	128	2.88	60	60	60
	CYPRUS	77	2.88	40	40	40
	DANUBE	43	2.88	20	—	20
	LENA	39	2.88	20	—	20
	MAUSER	16	2.88	6	—	—
	HERVE	14	2.88	6	—	—



Banquet Room OAK



1-4-1 Shioe, Amagasaki City, Hyogo, 661-0976 Japan

TEL: +81-6-6491-0002

FAX: +81-6-6491-8575

<https://www.hotelvischio-amagasaki.com>

- 1mins walk from JR Amagasaki Station (Easily accessible from Osaka and Kobe).
- 5mins by JR Rapid Service from JR Osaka Station.
- 11mins by JR Rapid Service from JR Shin-Osaka Station.
- 65mins from Kansai International Airport (KIX) by limousine bus.
- 40mins from Osaka International Airport (ITM) by limousine bus and JR Train (from Shin-Osaka Station).
- 10mins from Amagasaki IC by car.



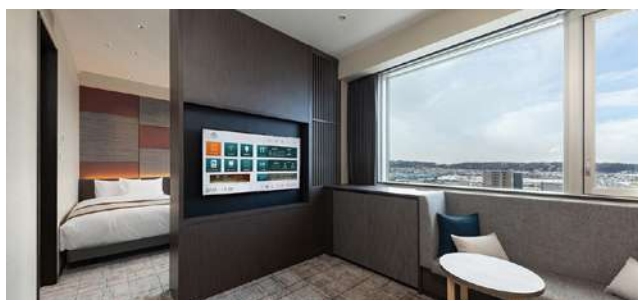


HOTEL VISCHIO TOYAMA

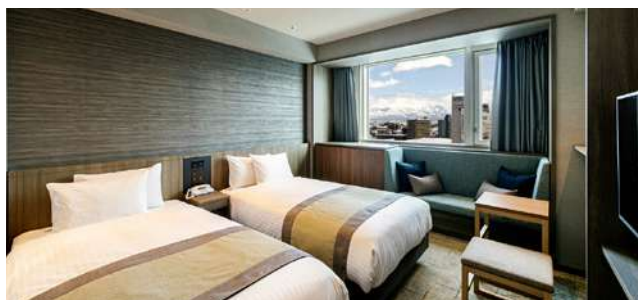
Just a minute from JR Toyama Station South Exit, come and stay at Hotel Vischio Toyama, the hotel with a Hotel Granvia experience but with simplified services. Adopting the "3B" approach to treat guests to high-quality bed furnishings, a communal bath area and unique breakfasts using Toyama's seasonal ingredients. We promise an unforgettable stay when in Toyama.

Guest Rooms

Scan the QR code for more information on guest rooms ▶



Concept Floor TOYAMA Premium Twin



Superior Twin

Restaurant

Scan the QR code for more information on restaurants ▶



Restaurant TOYAMA-SUSHI UMITOYAMA
VISCHIO GARDEN Breakfast venue 66seats

ROOMS : 182



CHECK IN 3:00pm

CHECK OUT 11:00am

Non-smoking

ROOM TYPE	ROOMS	SIZE(sqm/sqft)
Double	66	17-19 m ² /182-204 ft ²
Twin	96	19-32 m ² /204-344 ft ²

(Triple Bed Compatible: 16 Rooms)

Concept Floor TOYAMA

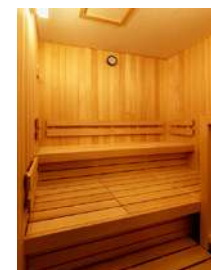
Twin	20	25-39 m ² /269-419 ft ²
------	----	---

(Triple Bed Compatible: 7 Rooms)

Facilities



Public Bath



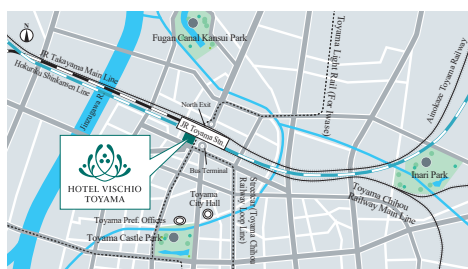
Dry Sauna



Guest Lounge



Laundromat



1-231 Meirincho, Toyama City, Toyama, 930-0001 Japan

TEL: +81-76-464-6639

FAX: +81-76-464-6266

<https://www.hotelvischio-toyama.com>

- 1mins walk from JR Toyama Station.
- 2hrs8mins by JR Shinkansen (bullet train) from Tokyo Station.
- <from Kansai> 2hrs50mins by Express Train (Thunderbird) from JR Osaka Station to Kanazawa Station.
- 19mins by JR Shinkansen from Kanazawa Station to Toyama Station.
- <from Nagoya> 3hrs by Express Train (Shirasagi) from JR Nagoya Station to Kanazawa Station. 19mins by JR Shinkansen from Kanazawa Station to Toyama Station.
- 25mins from Toyama Airport by Toyama railway bus.
- 20mins from Toyama IC by car.



Nara Hotel

Founded in 1909 as the premier accommodation for foreign dignitaries and VIPs visiting the Kansai region, Nara Hotel has served various important guests throughout its history. Its elegance and beauty have grown radiantly with each passing year. The leading classic hotel of its kind in Kansai, have a truly memorable stay at the Nara Hotel.

Scan the QR code for more information on guest rooms ▶



Guest Rooms



Deluxe Parkside Twin (Main Building)



Standard Twin (Main Building)



Standard Twin (New Building)

ROOMS : 127



CHECK IN 3:00pm

CHECK OUT 11:00am

ROOM TYPE	ROOMS	SIZE(sqm/sqft)
MAIN BUILDING		
Twin	39	22-27 m ² /236-290 ft ²
Deluxe	18	31-51 m ² /333-548 ft ²
Double	4	22-26 m ² /236-279 ft ²
Suite	1	87 m ² /936 ft ²
NEW BUILDING		
Twin	53	33 m ² /355 ft ²
Double	8	23 m ² /247 ft ²
Japanese Style	2	47-58 m ² /505-624 ft ²
Suite	2	66-127 m ² /710-1,366 ft ²

Breakfast



Main Dining Room MIKASA 130seats



Dinner



Main Dining Room MIKASA



Japanese HANAGIKU

Facilities

Visit our online shop here ▶



Hotel shop



Guest Lounge



Events & Meetings



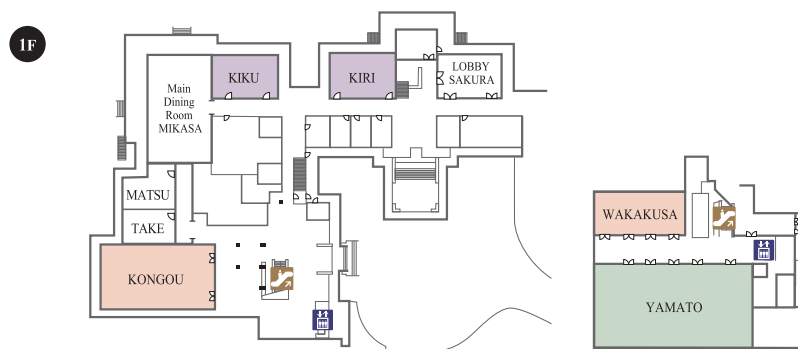
Scan the QR code for more information on banquet rooms ▶



YAMATO



KIRI



FLOOR	NAME	SIZE (m ²)	CEILING HEIGHT (m)	MAXIMUM Capacity		
				DINNER	BUFFET	SCHOOL
NEW Building 4F	YAMATO	452	3.5	330	400	280
	WAKAKUSA	132	2.7	60	70	60
NEW Building 5F	KONGOU	237	2.7	130	140	120
	MATSU	21	2.4	8	—	—
	TAKE	21	2.4	8	—	—
MAIN Building 1F	KIKU	85	5.6	40	50	30
	KIRI	85	4.2	40	50	30

Restaurants & Bar

Scan the QR code for more information on restaurants & bars ▶



Main Dining Room **MIKASA** 130seats



Japanese **HANAGIKU** 70seats



Café **TEA LOUNGE** 43seats



Bar **THE BAR** 43seats



1096 Takabatake-cho, Nara City, Nara 630-8301, Japan

TEL: +81-742-26-3300

FAX: +81-742-23-5252

<https://www.narahotel.co.jp/eng/>

- Free shuttle bus service from JR Nara and Kintetsu Nara Station.
- 60mins by JR train from JR Shin-Osaka Station.
- 35mins by Kintetsu Express Train from Kintetsu Kyoto Station.
- 80mins From Kansai International Airport (KIX) by limousine bus.
- 60mins from Osaka International Airport (ITM) by limousine bus to JR Nara and Kintetsu Nara Station.
- 20mins from Tenri IC by car.



+ U m e k o j i P o t e l K Y O T O

Located right next to Kyoto Aquarium and Umekoji Park, Potel (Cultural Port + Hotel) is more than a calm and quiet stay for travellers. Be introduced to a new and a little-explored side of Kyoto and continue to stay curious when staying with us.

G uest Rooms

Scan the QR code for more information on guest rooms ▶



Garden Twin



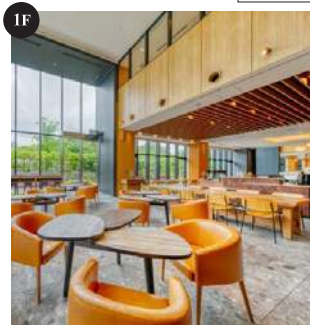
Woodflat Twin

R estaurant & Cafe

Scan the QR code for more information on restaurants & cafe ▶



RESTAURANT



CAFÉ

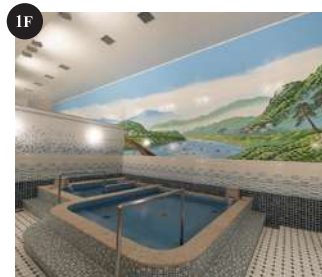
F acilities



AWAI NO MA (BOOKS)



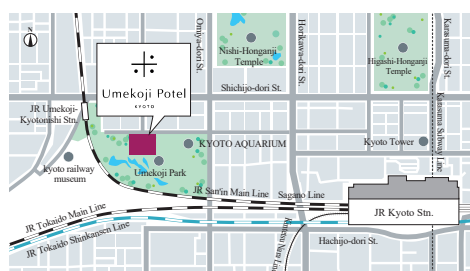
AWAI NO MA (GAMES)



SENTO (Public Bath)



ROOF TOP TERRACE



15 Kankiji-cho, Shimogyo-ku, Kyoto City, Kyoto, 600-8835 Japan

TEL: +81-75-284-1100

FAX: +81-75-371-3354

<https://www.potel.jp/en/>

- 15mins walk from JR Kyoto Station.
- 5mins walk from Umekoji-Kyotonishi Station.

