



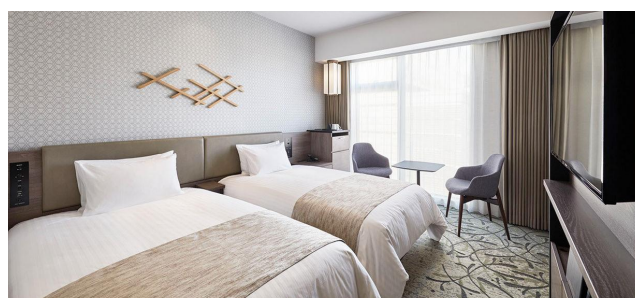
# HOTEL VISCHIO KYOTO

Situated two minutes away from JR Kyoto Station.

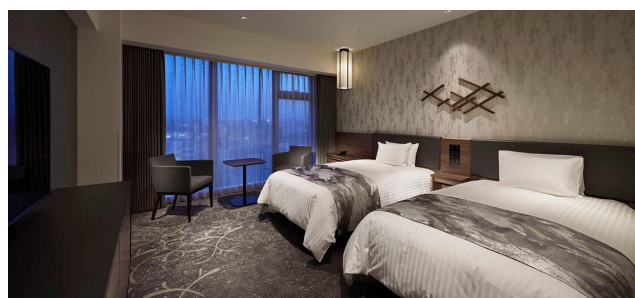
Using the "3B" approach, Hotel Vischio Kyoto is dedicated to provide all guests the "Hotel Granvia Kyoto" quality of "Bed", "Bath" and "Breakfast" made with Kyoto's local ingredients.

## Guest Rooms

Scan the QR code for more information on guest rooms ▶



Moderate Twin



Superior Twin

## Restaurant

Scan the QR code for more information on restaurants ▶



Restaurant VISCHIO GARDEN 184seats

ROOMS : 423

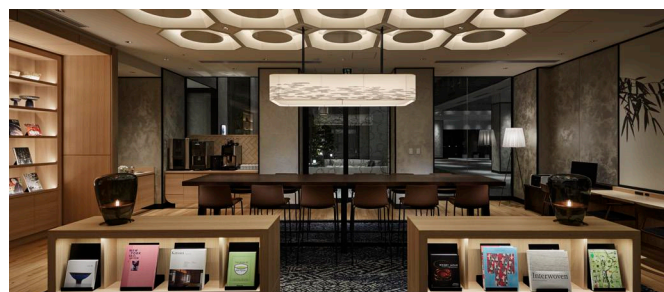


CHECK IN 3:00pm CHECK OUT 11:00am

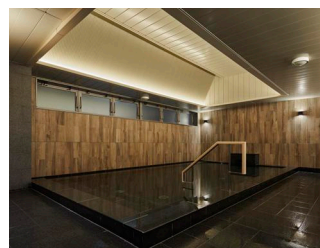
Non-smoking

ROOM TYPE	ROOMS	SIZE(sqm/sqf)
Double	56	21 m <sup>2</sup> /226 ft <sup>2</sup>
Twin	312	21-38 m <sup>2</sup> /226-409 ft <sup>2</sup>
Triple	49	26 m <sup>2</sup> /279 ft <sup>2</sup>
Family	5	39 m <sup>2</sup> /419 ft <sup>2</sup>
Barrier-Free	1	43 m <sup>2</sup> /462 ft <sup>2</sup>

## Facilities



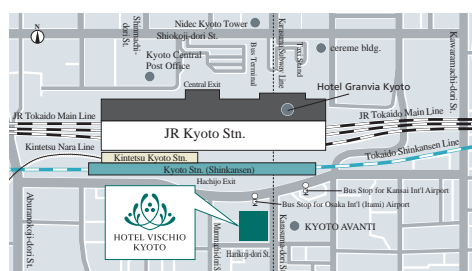
Guest Lounge



Public Bath



Fitness room



44-1, Kamitonoda-cho, Higashikujo, Minami-ku, Kyoto City, Kyoto, 601-8002 Japan

TEL: +81-75-280-1111

FAX: +81-75-280-0122

<https://www.hotelvischio-kyoto.com>

- 2mins walk from JR Kyoto Station Hachijo Exit.
- 2hrs20mins by JR Shinkansen (bullet train) from Tokyo Station.
- 75 mins from Kansai International Airport (KIX) by Haruka Express train, or 90 mins by limousine bus.
- 55mins from Osaka International Airport (ITM) by limousine bus.
- 20mins from Kyoto-Minami IC by car (30min. from Kyoto-Higashi IC by car).

